

mSystem Modular

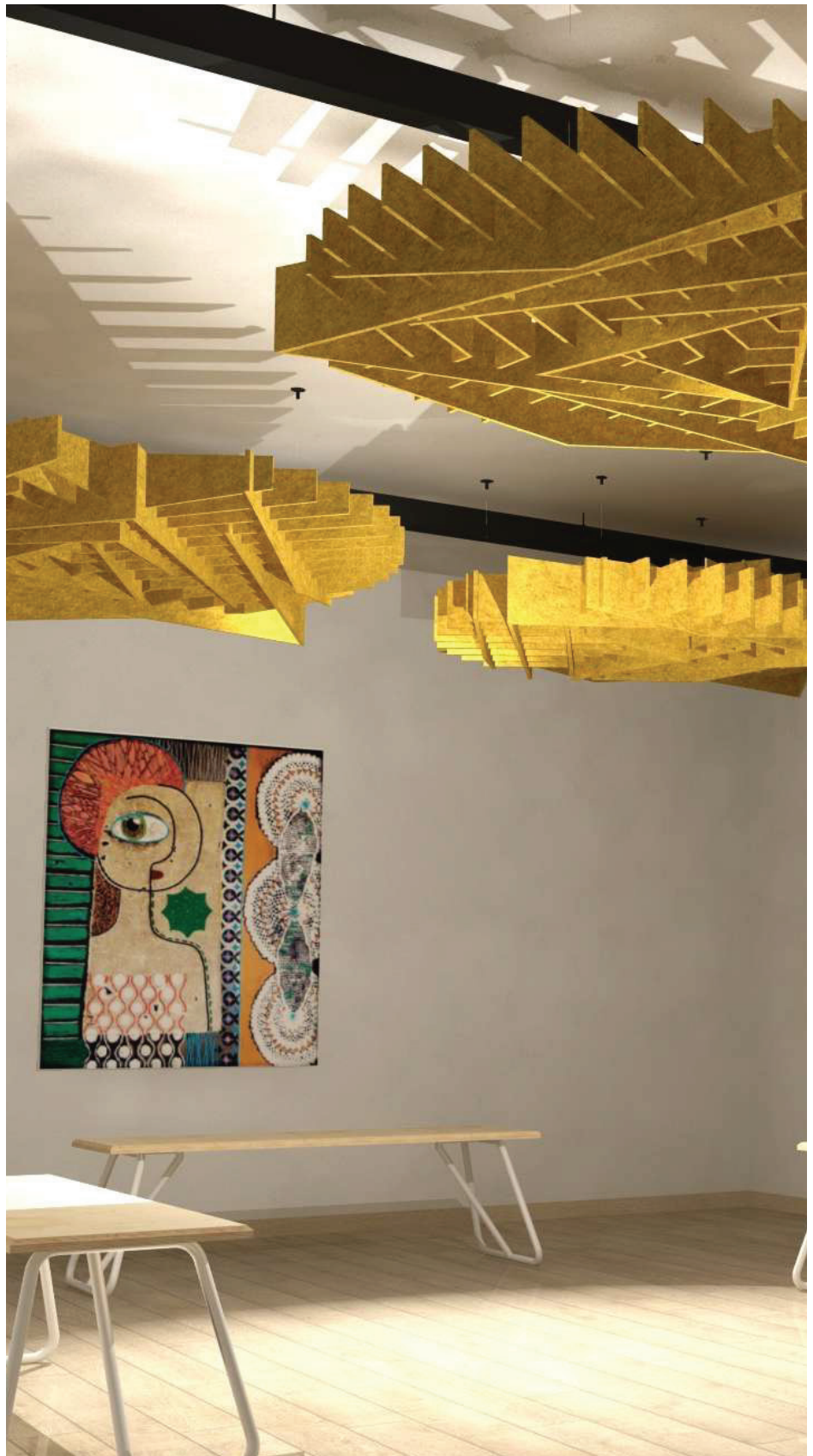
**URBAN
NOISE
CONTROL**

mSystem Modular

A modular ceiling system, a lightweight hanging baffle system made by 100% recycled PET, which can be placed to ceiling and provide significant sound absorption and desired aesthetics, within various types (private, special, commercial) of rooms.

The system can act as a false ceiling in a space/room and integrate in between/above of it, services as HVAC units, lights, fire water sprinklers, speakers and others.

The M-SYSTEM is guaranteed to bring a visually eye-catching ceiling solution to any project, through a cost-effective solution.



DESIGNING AND INSTALLATION

Apart from being suppliers and manufactures, UNC provide Designing and Installation services.

A specialised team of Acoustic Consultants and an experienced team of Acoustic Materials/systems Installers could carry out an end-to-end service for Acoustic treatment.

PRODUCT AVAILABILITY AND SAMPLES

UNC always have stock of the product and samples of each one of it. Feel free to contact us, in order to setting up a meeting in our showroom.



SPECIFICATIONS



MAINTENANCE

It can be cleaned by using a dust broom, a vacuum cleaner or a hard-wrung cloth.



SUSTAINABILITY

Those panels are made from sustainable materials. Panels are made from 100% polyester fiber. Containing a minimum of 75% post-consume recycled material (PET bottle-flake).

NON TOXIC

BS EN 717-1 E0 Formaldehyde-free environmental test. It does not contain chemical binders including formaldehyde and support safer indoor air quality.



FLAME RETARDANT

Class B-s1, d0 [EN-13501-1]

MATERIAL

POLYESTER FIBER

100% made from recycled PET





**STANDARD
DIMENSIONS
AND TYPES**

CROSS MODULAR

Module sizes:

1060x1060mm &
2120x2120mm

Baffles Thickness:

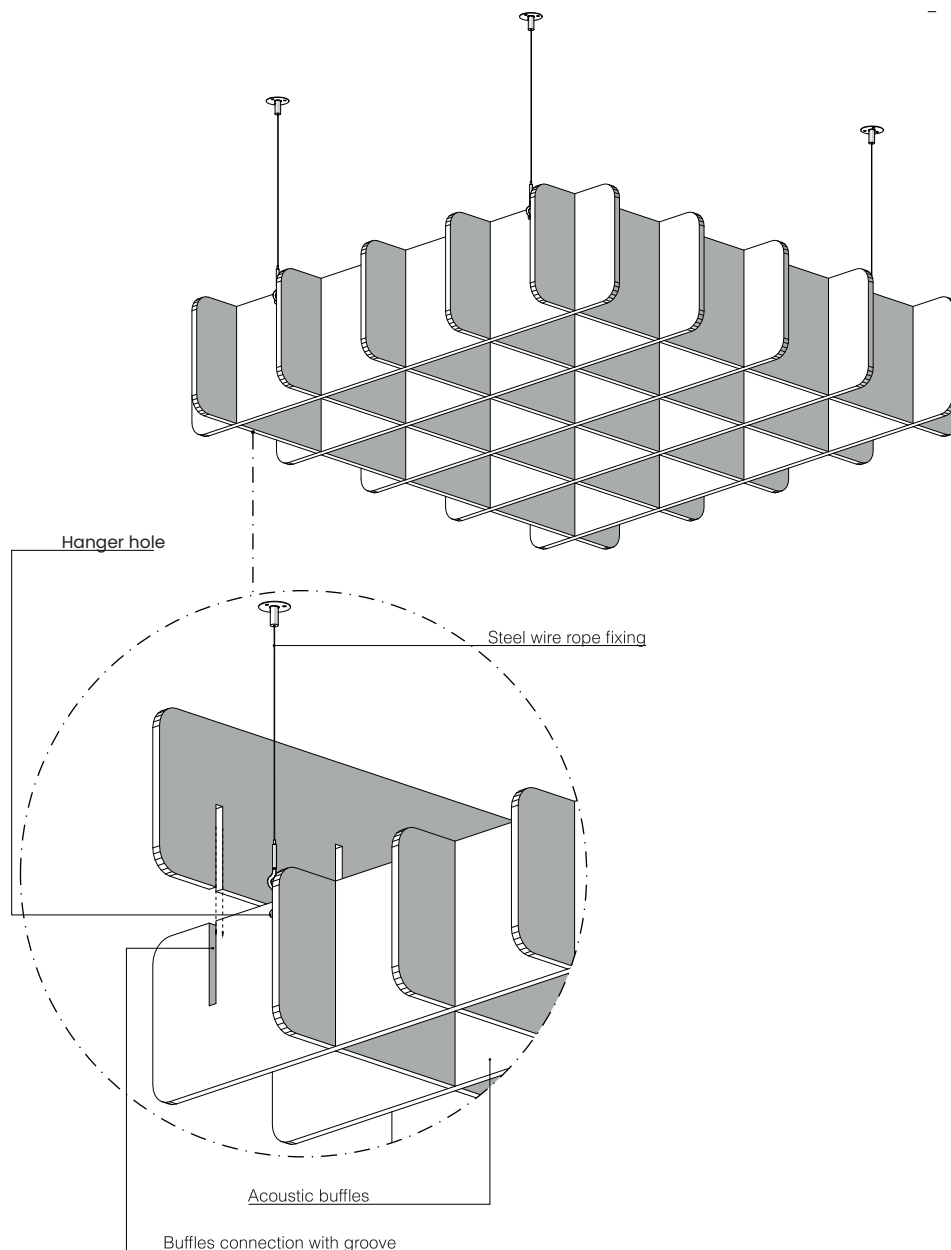
12mm

Hanged method:

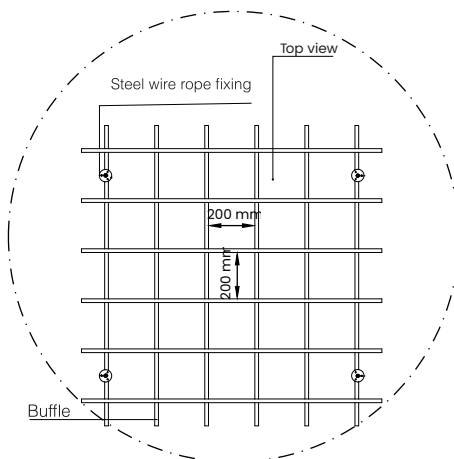
Galvanised steel hook
and wire rope

Hanged height:

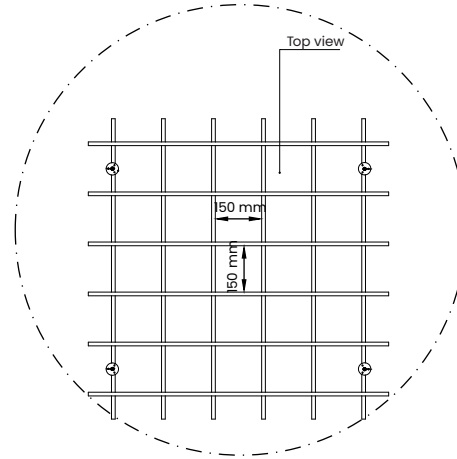
Flexible (according to needs)



CROSS MODULAR 0.1



CROSS MODULAR 0.2





STANDARD DIMENSIONS AND TYPES

ARC MODULAR

Module sizes:

1060x1060mm &
2120x2120mm

Baffles Thickness:

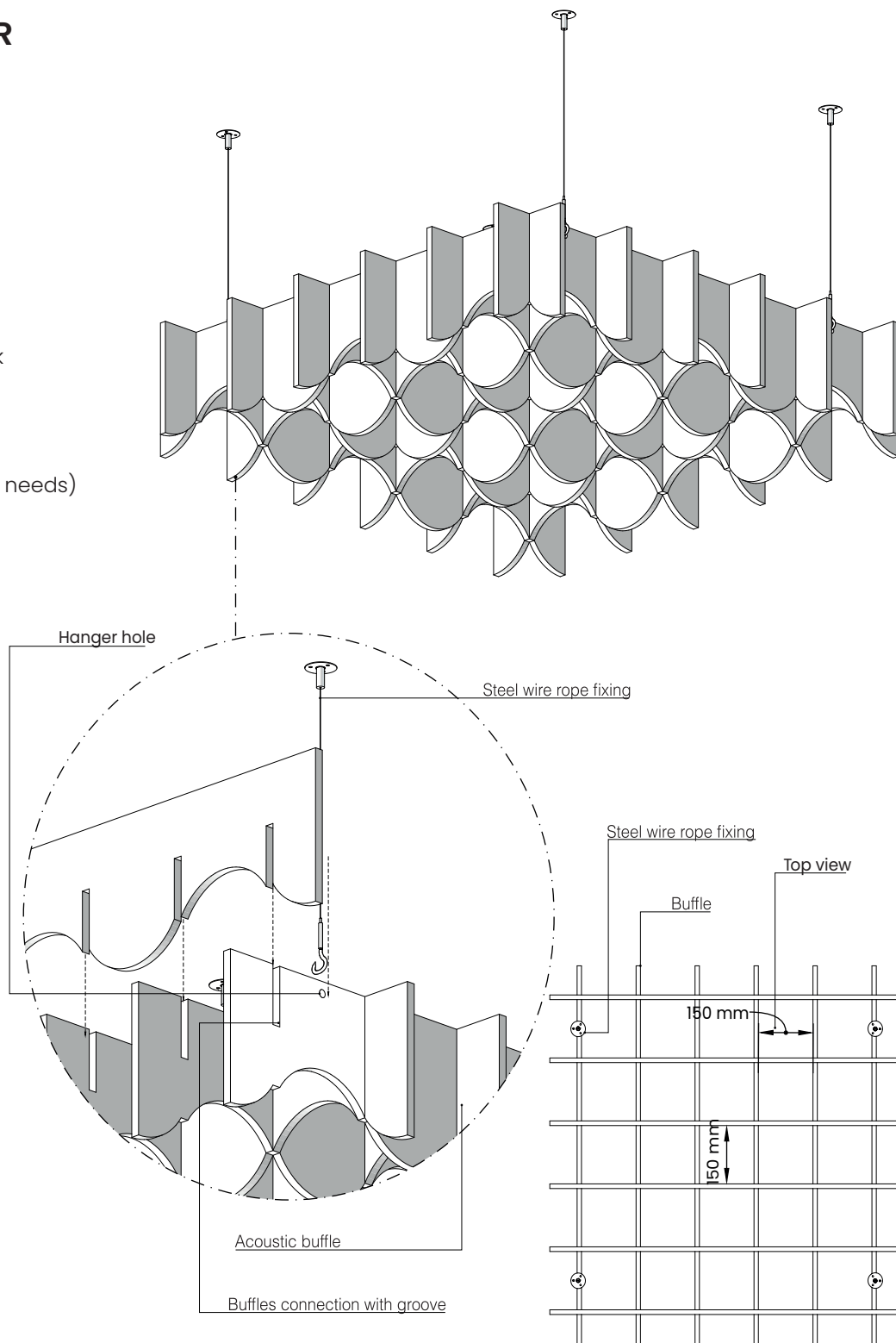
12mm

Hanged method:

Galvanised steel hook
and wire rope

Hanged height:

Flexible (according to needs)





STANDARD DIMENSIONS AND TYPES

CURVED MODULAR

Module sizes:

Ø 1200mm & Ø 1800mm

Baffles Thickness:

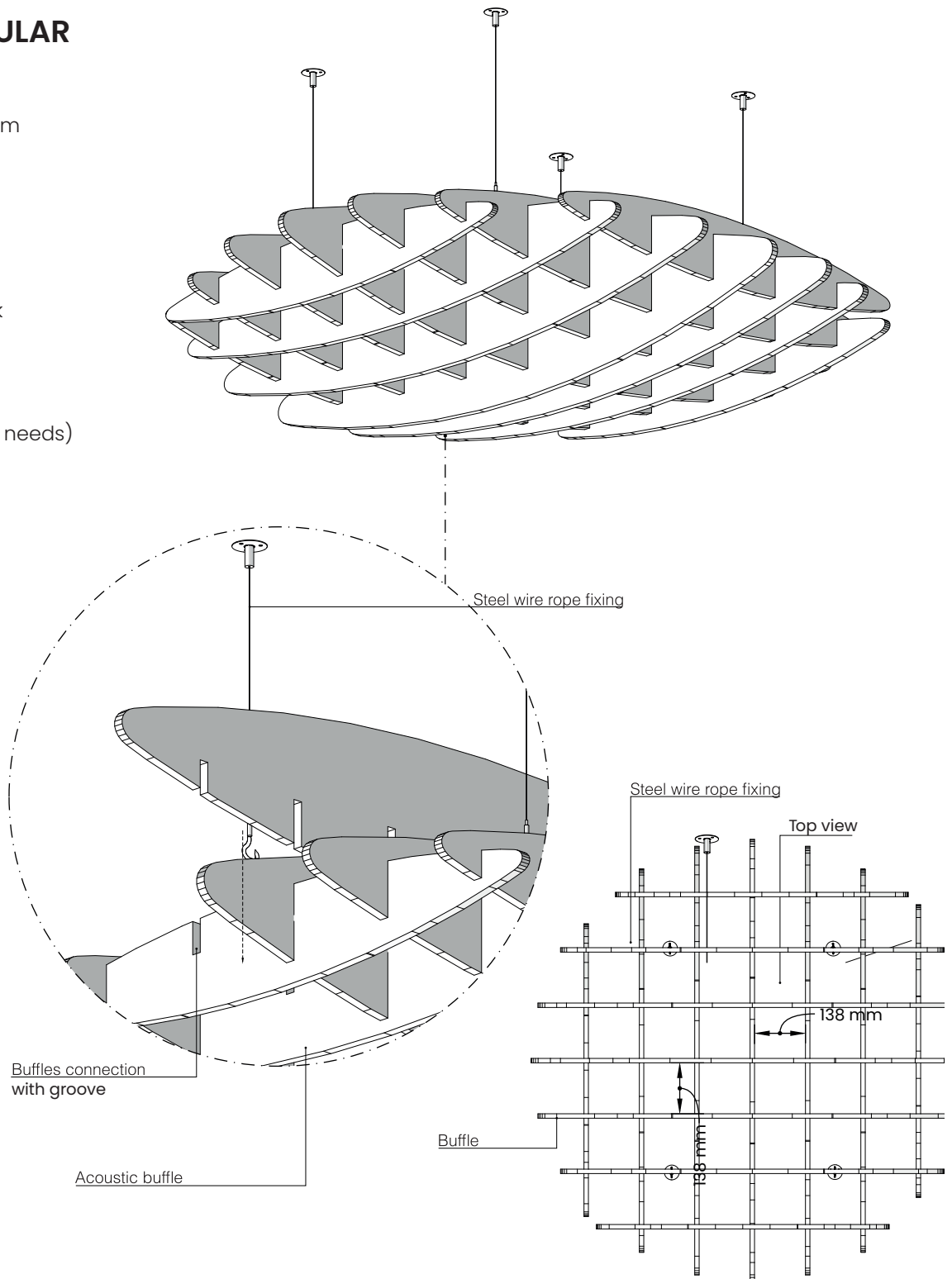
12mm

Hanged method:

Galvanised steel hook and wire rope

Hanged height:

Flexible (according to needs)





STANDARD DIMENSIONS AND TYPES

EDGY MODULAR

Module sizes:

Ø 1200mm & Ø 1800mm

Baffles Thickness:

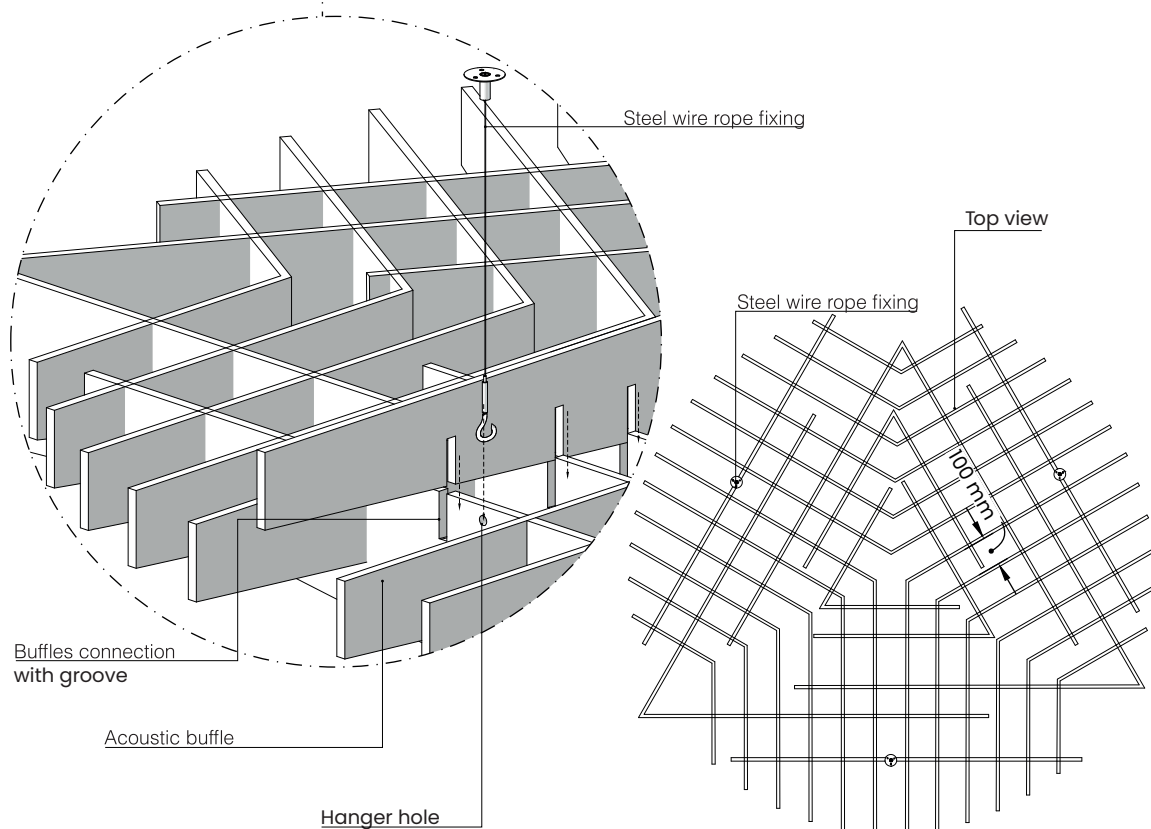
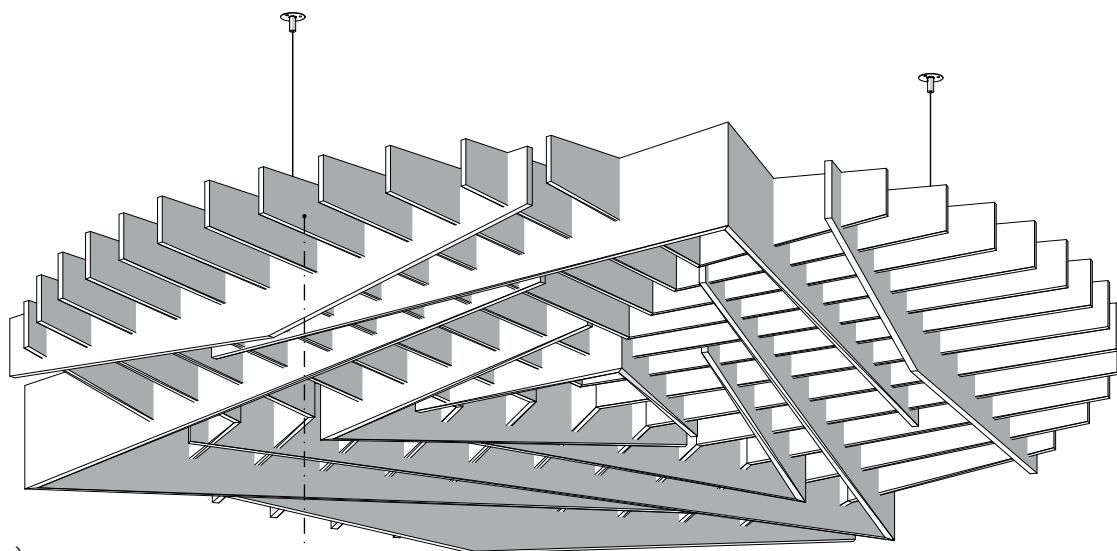
12mm

Hanged method:

Galvanised steel hook and wire rope

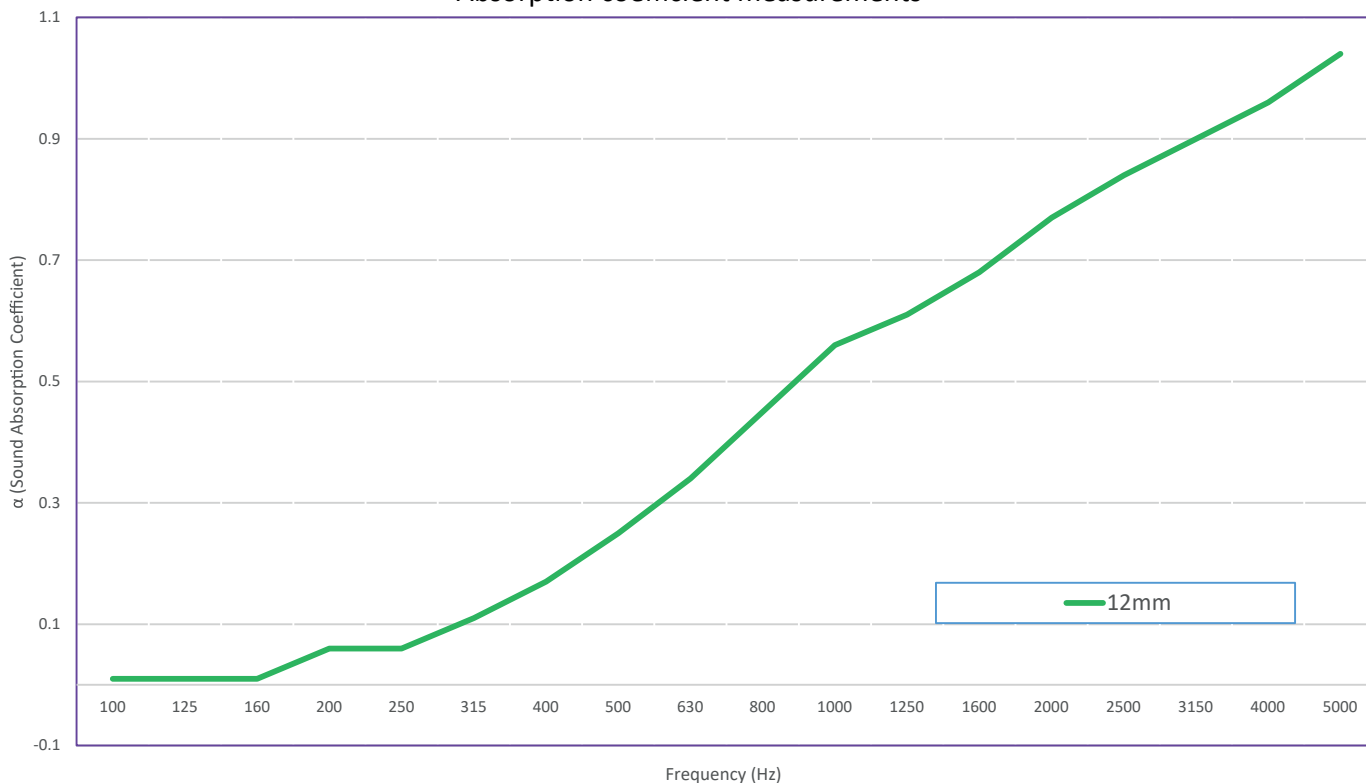
Hanged height:

Flexible (according to needs)



**SOUND
ABSORPTION**

M-SYSTEM Modular
Absorption coefficient measurements



M-SYSTEM Modular
Sound class D ($\alpha_w=0.30$)
[according to ISO 354:2003
& ISO 11654:1997]

**SOUND
ABSORPTION**

Frequency (Hz)	12mm	
100	0.01	0.01
125	0.01	
160	0.01	
200	0.06	0.08
250	0.06	
315	0.11	
400	0.17	0.25
500	0.25	
630	0.34	
800	0.45	0.54
1000	0.56	
1250	0.61	
1600	0.68	0.76
2000	0.77	
2500	0.84	
3150	0.9	0.97
4000	0.96	
5000	1.04	



Suite No: 238, Al Shafar Investment Building, Sheikh Zayed Road,
Al Quoz, P.O. Box: 212688, Dubai, UAE
www.europhonacoustics.com