

The **MATADOR™ baffle blade** is the ideal system for creating a unique atmosphere within a room space that combines simplicity and symmetry. They are perfect for places with high ceiling levels and open spaces. Baffles are further ideal for suppressing noise effluence and can contribute to the improvement of the acoustics of a space where sound quality is important.



MATADOR™ Baffle Blade

RAW MATERIAL

Aluminium Alloys per EN AW 3000 & 5000 series.
or
Galvanized Steel; Zinc coating as per requested.
Standard: Z275/G90

THICKNESS (mm)

Aluminium 0.5 – 0.8
Galvanized Steel 0.5 – 0.7

SIZE (mm)

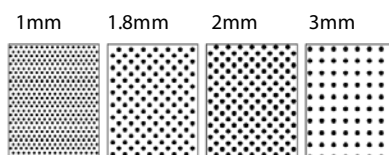
Length: up to 4000
Width: up to 220
Height: up to 300

+ Custom sizes available on request

S
P
E
C
I
F
I
C
A
T
I
O
N

SURFACE FINISH

Plain
Perforated
Standard
Patterns:



+ Full perforation patterns available at our website. Custom patterns upon request.

INSULATION

Acoustic Black Fleece; Royalin®
Heat bonded nonwoven and nonflammable soundabsorbent acoustic black felt with surface-burning characteristics for flamespread index = 5 and smoke-developed index = 25 as per ASTM E84

Rockwool Blocks
Conforming to ASTM C612 and equivalent BS 39585 are provided for acoustic insulation and fire hazard.

COATING

Polyester

Top Coat: 5 Microns Primer + 25 Microns Polyester paint applied in a continuous coil coating process ensuring uniform coating and absolute adhesion
Reverse Coat: 5 - 7 Microns Primer for extra tile protection.

Powder

Electrostatic Polyester Powder Coating applied in a nominal thickness of 70 microns.



White Silver Grey Gunpowder Grey



Standard Wooden Finish



RAL

PERFORMANCE



ACOUSTICS

Sound absorbent acoustic tissues are used for perforated surface patterns. Noise reduction coefficient, NRC = 0.80 tested in accordance with ASTM C423. Matador Acoustic Felt are black, non woven and nonflammable tested as per ASTM E84



ANTI-BACTERIAL

Special paint with anti bacterial property that prohibits microbial growth on the ceiling surface tested in accordance with JIS Z2801:2000



LIGHT REFLECTANCE

Light reflectance value of the white ceiling panels is 0.81 which is tested as per ASTM E 1477-98A



FIRE PERFORMANCE

Fire Surface Spread of Flame and Smoke Developed Classification: Class 1 as per BS 476 Part 7 Class A as per ASTM E84



CLEANABILITY

By applying any household mild detergent on the surface then wiping with a soft cloth



CORROSION

Corrosion Resistance tested as per ASTM B 117-73, salt spray tested for 1000 hours



HUMIDITY

Humidity Resistance = 95% as per ASTM D2477



SCRUBBABILITY

Endures up to 150 scrubs as per ATSM 02486



DIRT RESISTANCE

Excellent resistance to dirt/grease for lasting performance and less maintenance



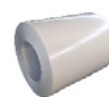
WARRANTY

10 Years warranty against any manufacturing defects. Refer to Marconi warranty letter for more details



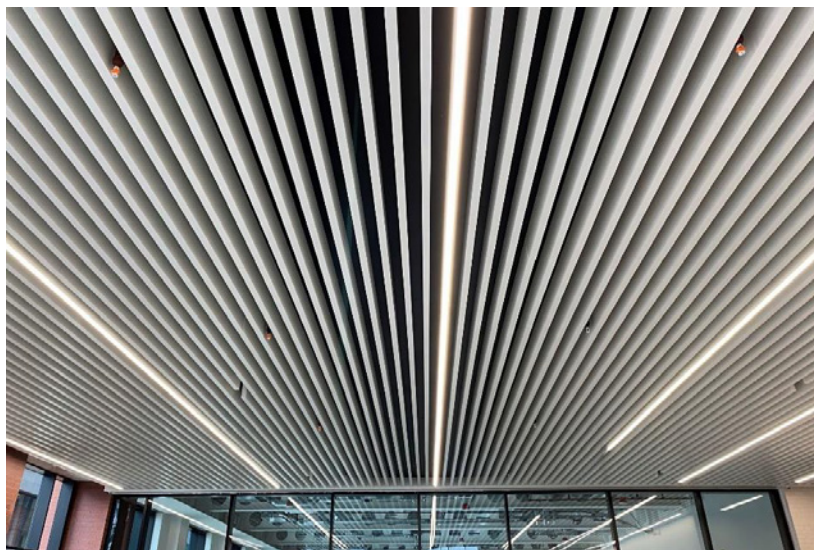
LEED

Environmentally friendly material with processes contributing to LEEDNC building requirements



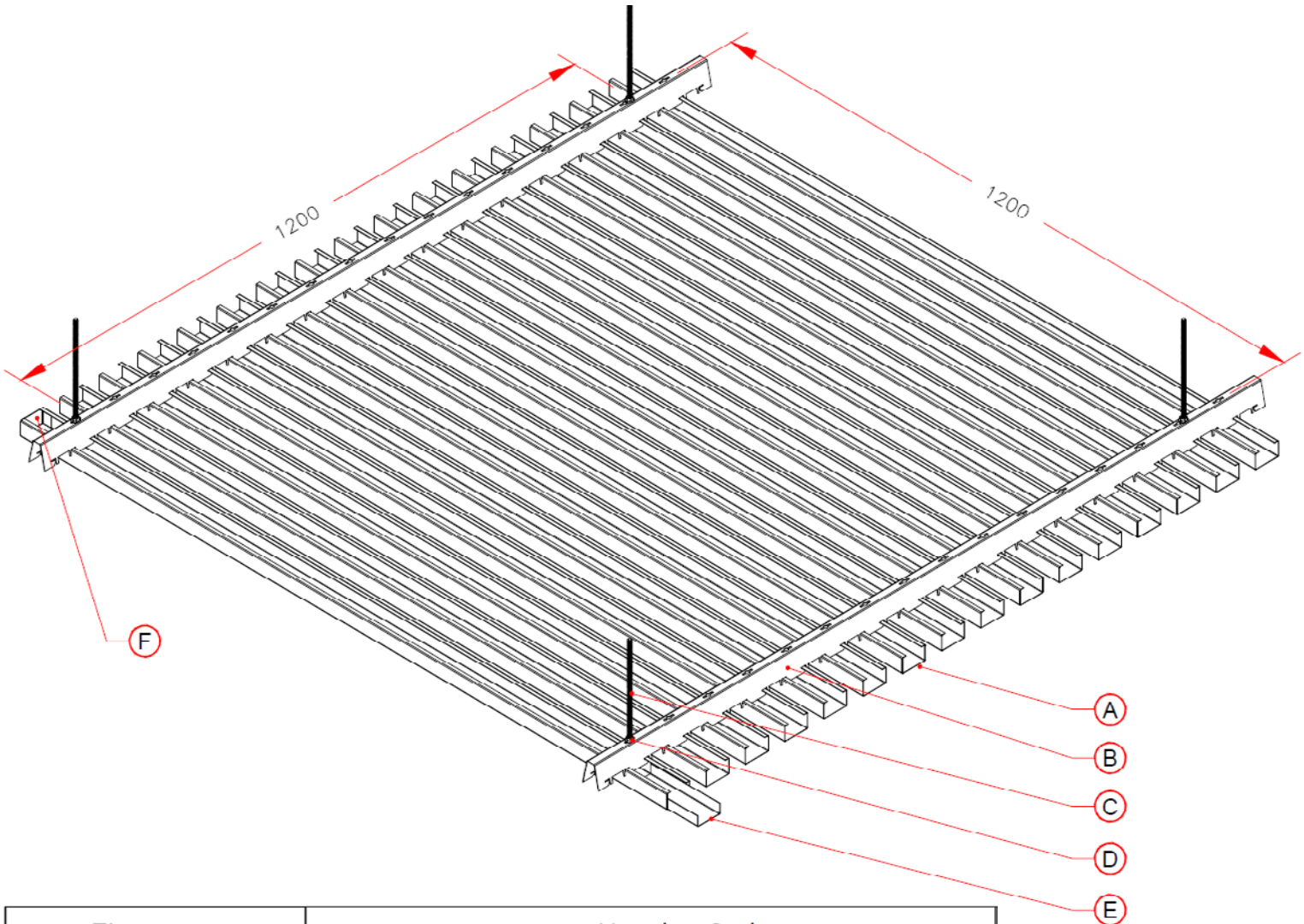
COATING CERTIFICATE

Tested under standard conditions and performed as per ECCA methods and under EN1396 norms

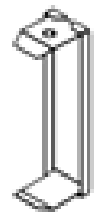


SUSPENSION SYSTEM

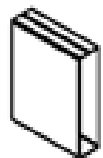
The MATADOR™ U-Baffle Blades are designed for simplicity in installation and uninstalling which are placed onto the carrier by pulling the sides away from each other and clipping them onto their carrier. Carriers are supported by wire rods or wire hangers & adjustment clips and hung directly from the concrete ceiling.



Elements	Hanging Options
<ul style="list-style-type: none"> (A) 'U' Baffle Panel (B) Carrier (C) Threaded Rod M6 (D) Nut & Washer (E) Splicer (F) End Cap 	



END CAP is used to cover the open area of the edge of the baffle for aesthetic



SPLICE is used to connect 2 baffles together

MATADOR™ Baffle Blade

Europhon Acoustics
 Suite: 238, Al Shafar Investment Building
 7A St - Al Quoz - Al Quoz 1 - Dubai - United Arab Emirates
 +971 4 380 7744
 info@europhonacoustics.com

MARCONI METAL INDUSTRIES,
 Dubai Industrial City,
 United Arab Emirates

For Technical Support
 For Design Support
 contact +971 4 380 9200

www.marconiceilings.com
mail@marconiceilings.com



Europhon Acoustics
 YOUR SKIES REALIZED